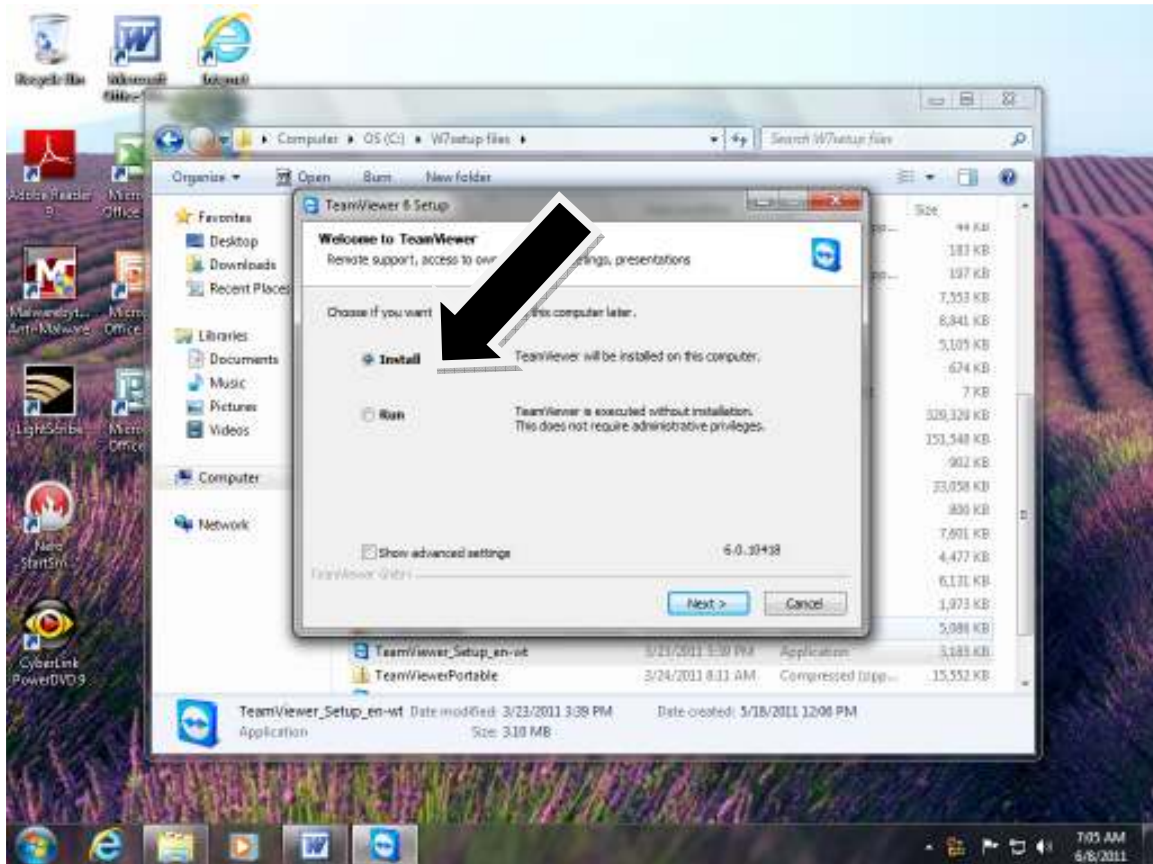


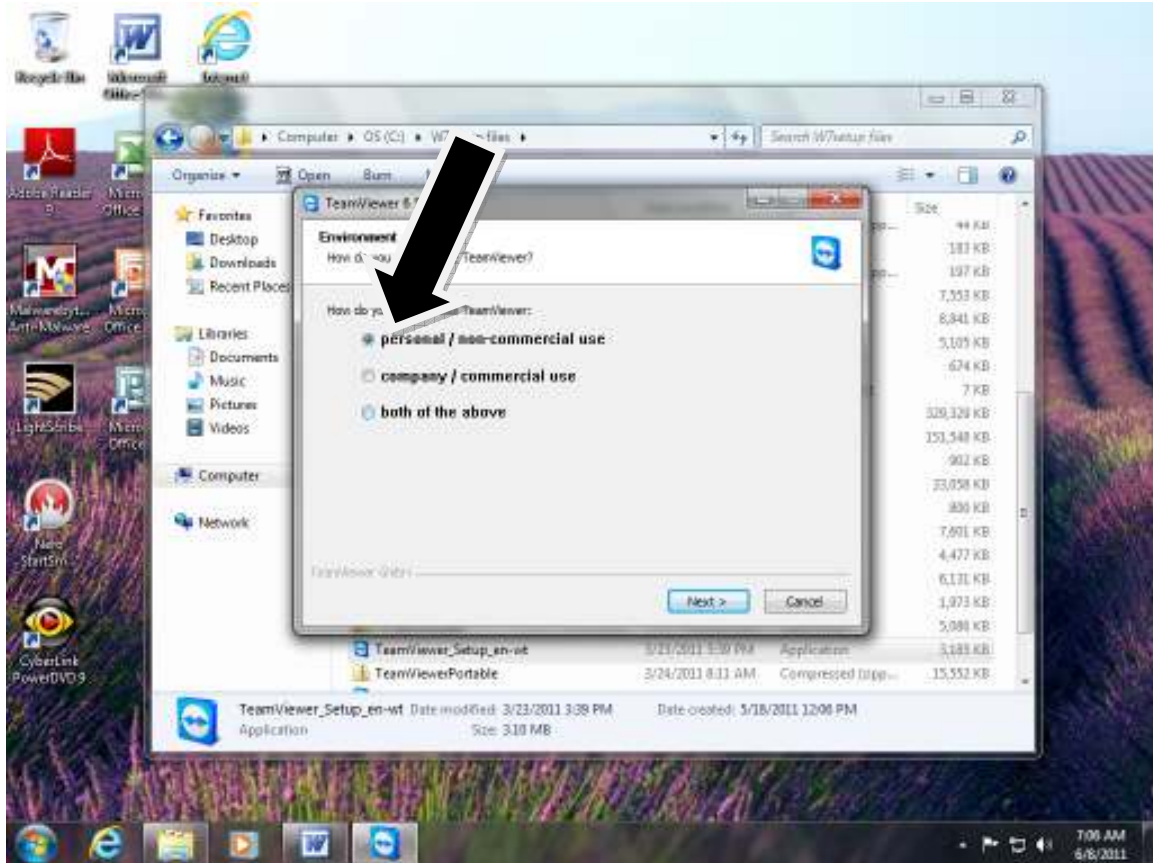
TEAMVIEWER Setup

Download and open team Viewer

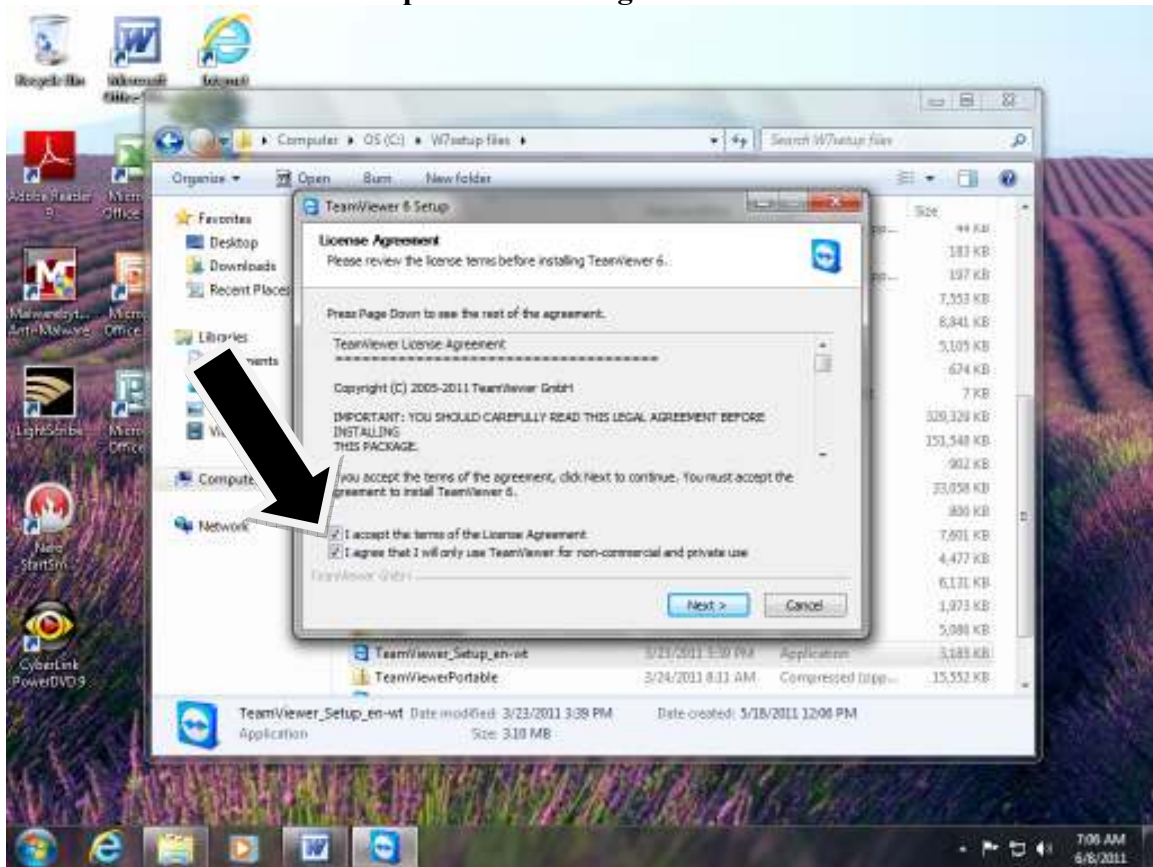
Click “Install and Next”



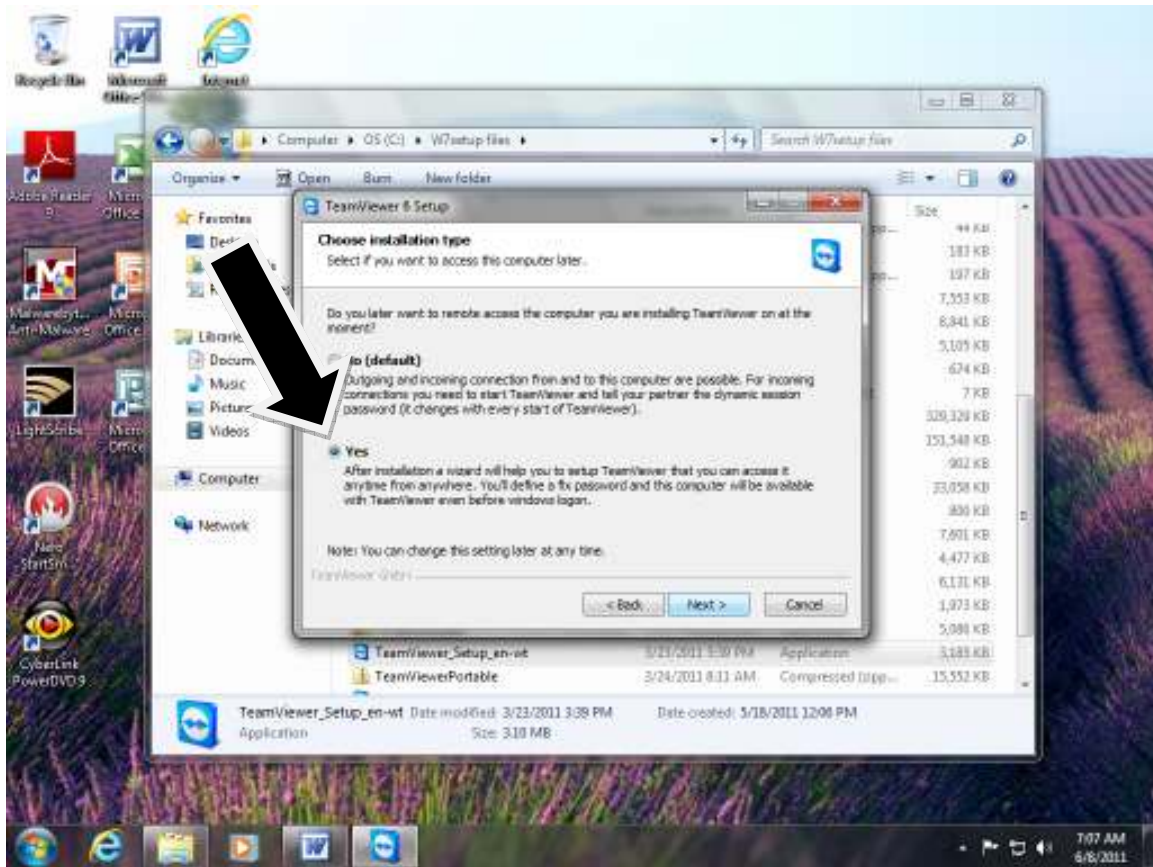
Click “personal / non-commercial and Next”



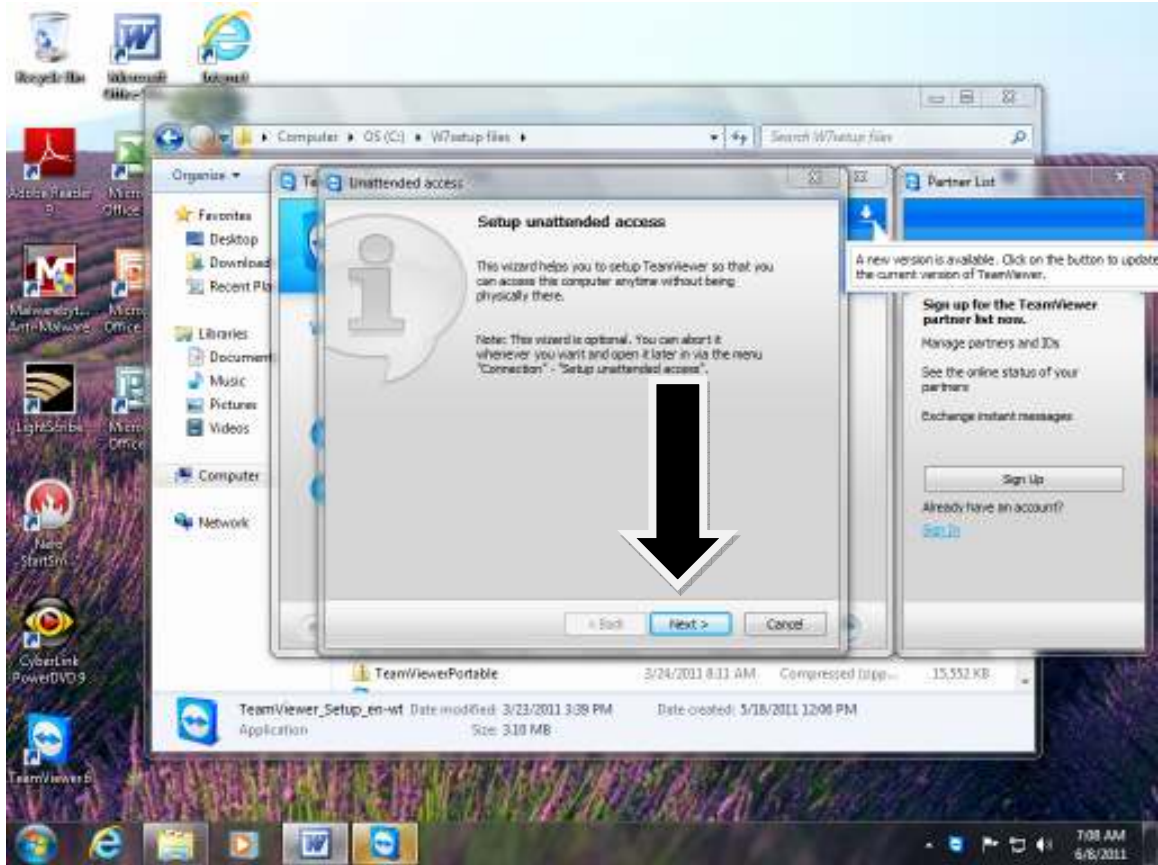
Check “the two boxes to accept the License agreements and Click Next”



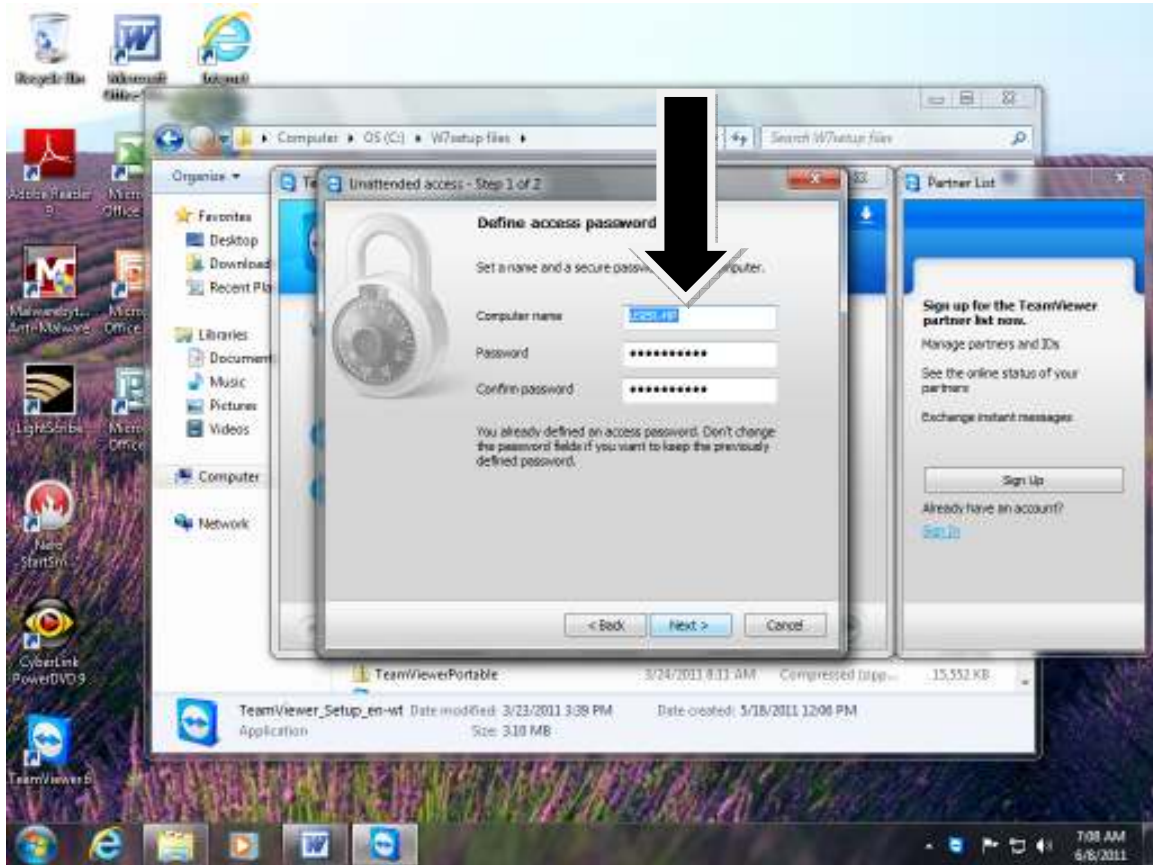
Click “Yes and Next”



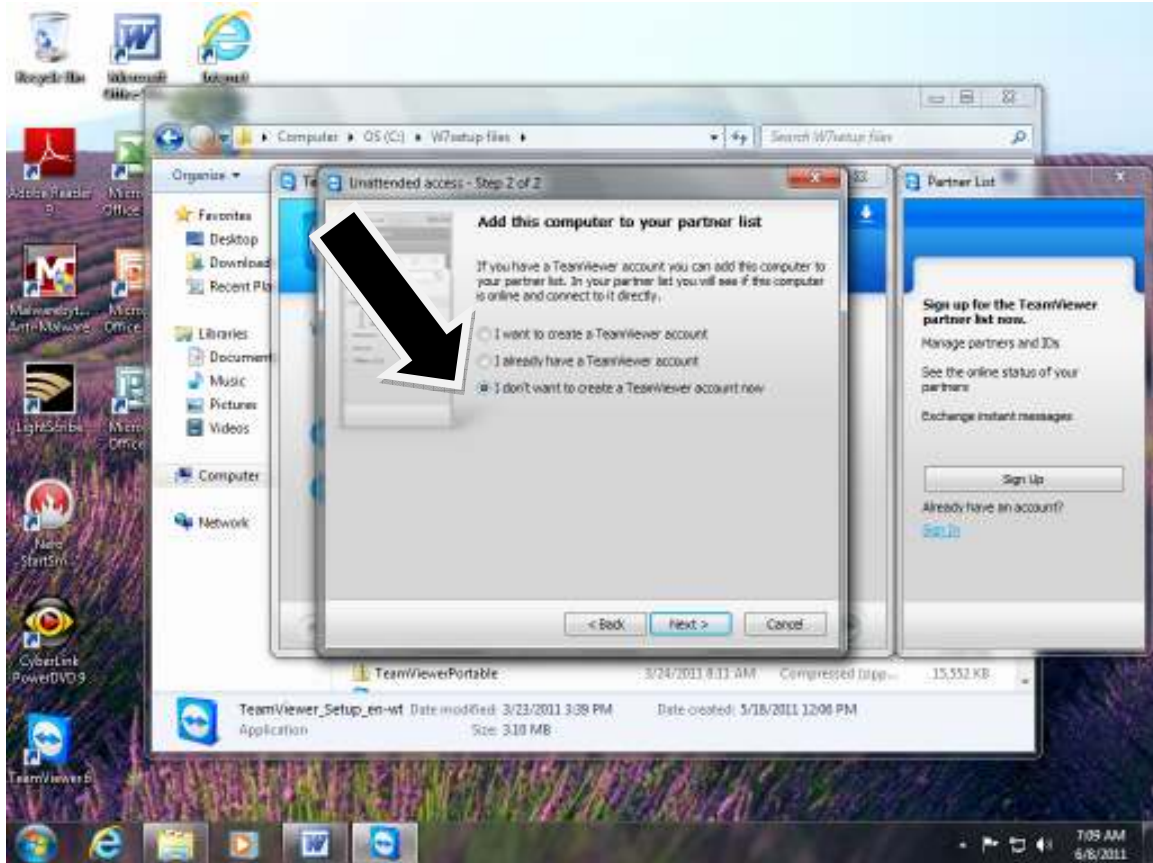
Click “Next”



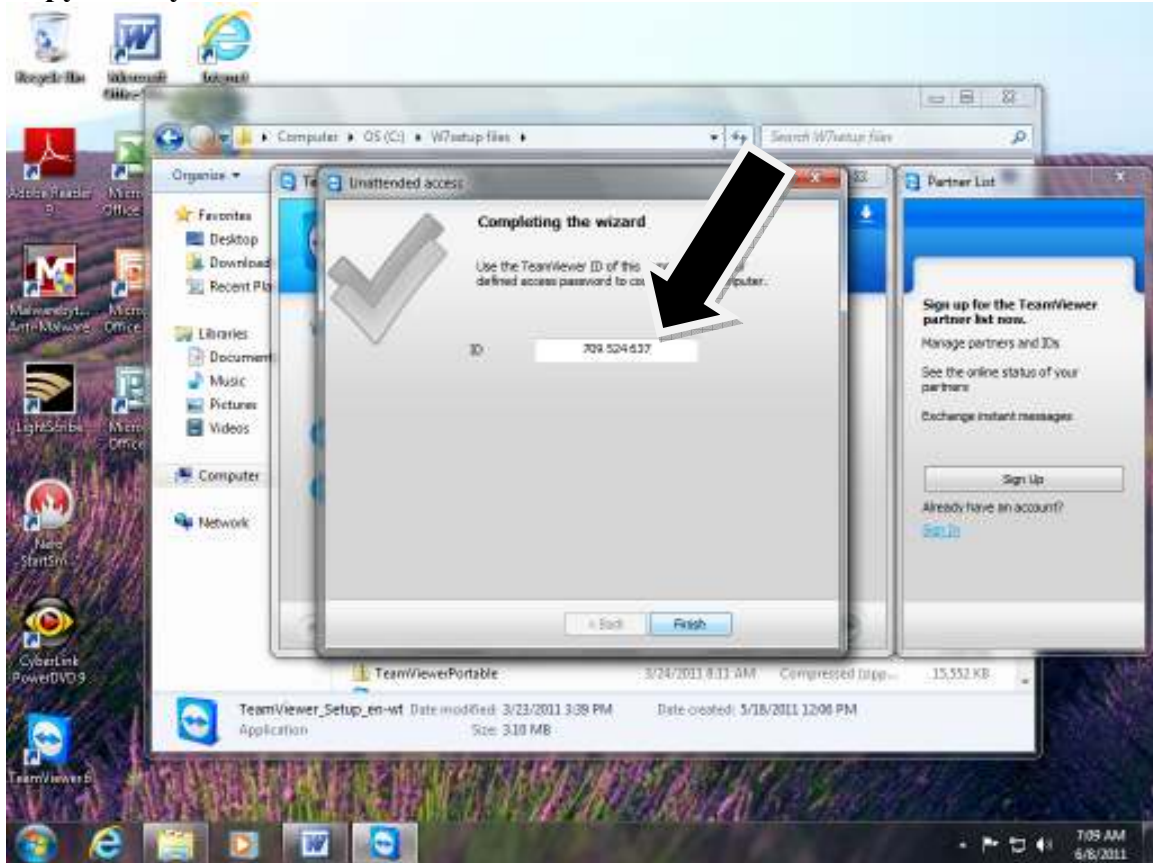
Enter a Computer Name and a Password.
Descriptive Computer Name - Counter1, Checkout, Mary's
Password - wtladmin



Select “I don’t want to create teamviewer account now” and “Next”.



Copy down your ID Number and send WTLS Staff.



Close Teamviewer